



PEOPLE'S DEMOCRATIC REPUBLIC OF ALGERIA
MINISTRY OF FINANCE
GENERAL DIRECTORATE OF CUSTOMS



1 CURRENCY
AND
VALUABLES



NEED HELP



CONTACT THE GENERAL DIRECTORATE OF CUSTOMS:

PHONE LINE : 023 50 11 76/99

الرقم الأخضر 10.23

HELPPDESK UNIT :

PHONE LINE : 023.88.73.55 / 023. 88. 72. 24

FAX : 023. 88. 73. 62 / 023. 88. 72. 22

EMAIL ADDRESS : alceshelpdesk@douane.gov.dz

SCAN THE QR CODE BELOW
TO ACCESS THE ALGERIAN CUSTOMS WEBSITE :

douane.gov.dz



www.douane.gov.dz
dinf@douane.gov.dz

TRAVEL INFORMATION

DECLARATION OF CURRENCY (FOREIGN/NATIONAL)
AND VALUABLES
ON ENTRY AND EXIT



Departures					
16:30	NEW YORK	Gate 31	ARRIVAL	18:05	BUDAPEST
16:45	MADRID	Gate 32	CANCELLED	18:10	TORONTO
17:30	TOKYO	Gate 41	CANCELLED	18:15	BERLIN
17:35	ALGIERS	Gate 71	ARRIVAL	18:30	SEVILLA
17:40	BOGOTA	Gate 37	ARRIVAL	18:30	FLORENCE
17:45	PARIS	Gate 71	ARRIVAL	19:30	FLORIDA
17:50	LONDON	Gate 32	CANCELLED	20:30	SEOUL
17:55	CHICAGO	Gate 21	ARRIVAL	21:30	CAIRO
	HANGAI	Gate 30	ARRIVAL	22:30	SIDNEY

2025

www.douane.gov.dz
dinf@douane.gov.dz

DON'T FORGET TO DECLARE YOUR CURRENCY AND VALUABLES



IMPORT AND EXPORT OF CURRENCY

Traveling to or from Algeria? Be sure to follow currency declaration procedures for a smooth customs experience.



The physical import and export of currency is **strictly subject** to a **declaration** to Algerian Customs services

Obligation to Declare Currency When Entering or Leaving the National Territory :

- Algerian nationals are required to declare imported or exported currency to customs if the amount exceeds 1,000 Euros or its equivalent in other currencies.
- Foreign nationals are required to declare imported or exported currency to customs if the amount exceeds 5,000 Euros or its equivalent in other currencies.

AUTHORIZED AMOUNTS FOR EXPORT :

It is permitted to take out any amount in foreign currency banknotes or traveler's checks, under the following conditions :

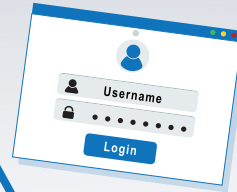
- A maximum amount of **7,500 Euros** in cash (or its equivalent in another foreign currency) **per calendar year**, provided a **bank debit notice** is presented for any withdrawal exceeding the regulatory declaration thresholds, from a foreign **currency account held in Algeria**.
- Any amount covered by a foreign **exchange authorization** from the **Bank of Algeria**.
- International **bank cards**.



- ✗ **NB** : Non-residents must present a bank receipt proving the exchange of part or all of the declared amount in foreign currency (**exceeding €1,000**) upon entry into Algerian territory.

Entry and Exit of Algerian Dinar (DZD):

Only resident travelers are allowed to bring in and take out Algerian banknotes, up to a maximum of **10,000 DZD**.



**CREATE
YOUR ACCOUNT
NOW !**

**REGISTER
ALCES**



**Register in our information system
ALCES**
to submit your **DECLARATION ONLINE** and
simplify your customs procedures
▶ alces.douane.gov.dz

To register
scan here



For information
scan here



ALSO DECLARE YOUR VALUABLES



VALUABLES INCLUDE:

PERSONAL JEWELRY MADE OF GOLD, PLATINUM, SILVER, PALLADIUM, OR OTHER PRECIOUS MATERIALS

DECLARATION IS REQUIRED IF THE TOTAL WEIGHT EXCEEDS :

- 100 GRAMS **UPON ENTRY**
- 150 GRAMS **UPON EXIT**



Failure to Declare or False Declarations Constitute an Offense.
Such infractions may lead to criminal prosecution.

KEY POINTS TO REMEMBER :

- ✗ Currency declaration is mandatory.
- ✗ Travelers must submit their currency declaration, primarily via electronic means, prior to arriving at the customs office.
- ✗ This declaration may also be made in writing, upon entry or exit, in accordance with the form templates established by current regulations.
- ✗ The currency declaration form is valid for a single stay only.
- ✗ Any declared amount must be presented to customs officers for inspection purposes.
- ✗ The shipment of foreign currency banknotes, coins, or any bearer instruments via freight or mail is prohibited.
- ✗ The currency declaration must be made before crossing the designated customs control area.
- ✗ A traveler who crosses the limits of the designated customs control area without having completed this formality beforehand is considered to have nothing to declare or to be carrying amounts below the declaration thresholds.

Travel with peace of mind by complying with customs regulations!

